

IBMP definition of the Eagle Creek bison conservation area

During a phone call on April 23, 2013, managers of Yellowstone bison discussed that year-round tolerance for bison in the northern management area is currently limited to the Eagle Creek/Bear Creek area, pursuant to the IBMP.

The Record of Decision for the IBMP indicates on page 11 that "... untested bison would be allowed to occupy the Eagle Creek/Bear Creek area, Cabin Creek Recreation and Wildlife Management Area, and the Monument Mountain Unit of the Lee Metcalf Wilderness year-round without agency interference because these areas do not have cattle grazing within them or nearby." This tolerance is reiterated on page 37: "Identifying public lands adjacent to the park with no cattle grazing allotments where bison would be allowed to roam freely. The agencies will simply monitor bison presence in these areas. These areas include Eagle Creek/Bear Creek, the Absaroka Beartooth Wilderness, and the Cabin Creek Recreation and Wildlife Management Area/Lee Metcalf Wilderness/Upper Gallatin areas."

The following figures delineate the Eagle Creek/Bear Creek area.

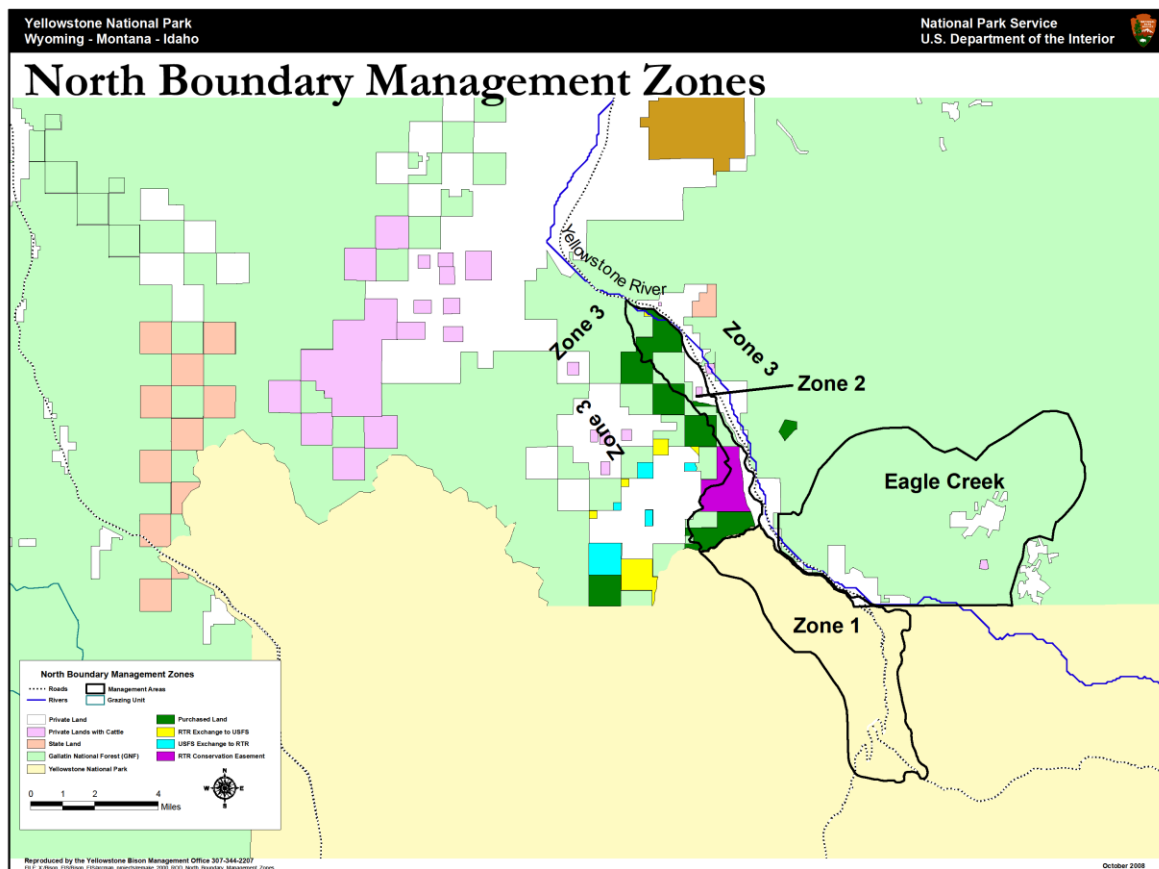


Figure 1. Northern management zones from the Record of Decision for the Interagency Bison Management Plan (2000).

Eagle Creek Bison Conservation Area

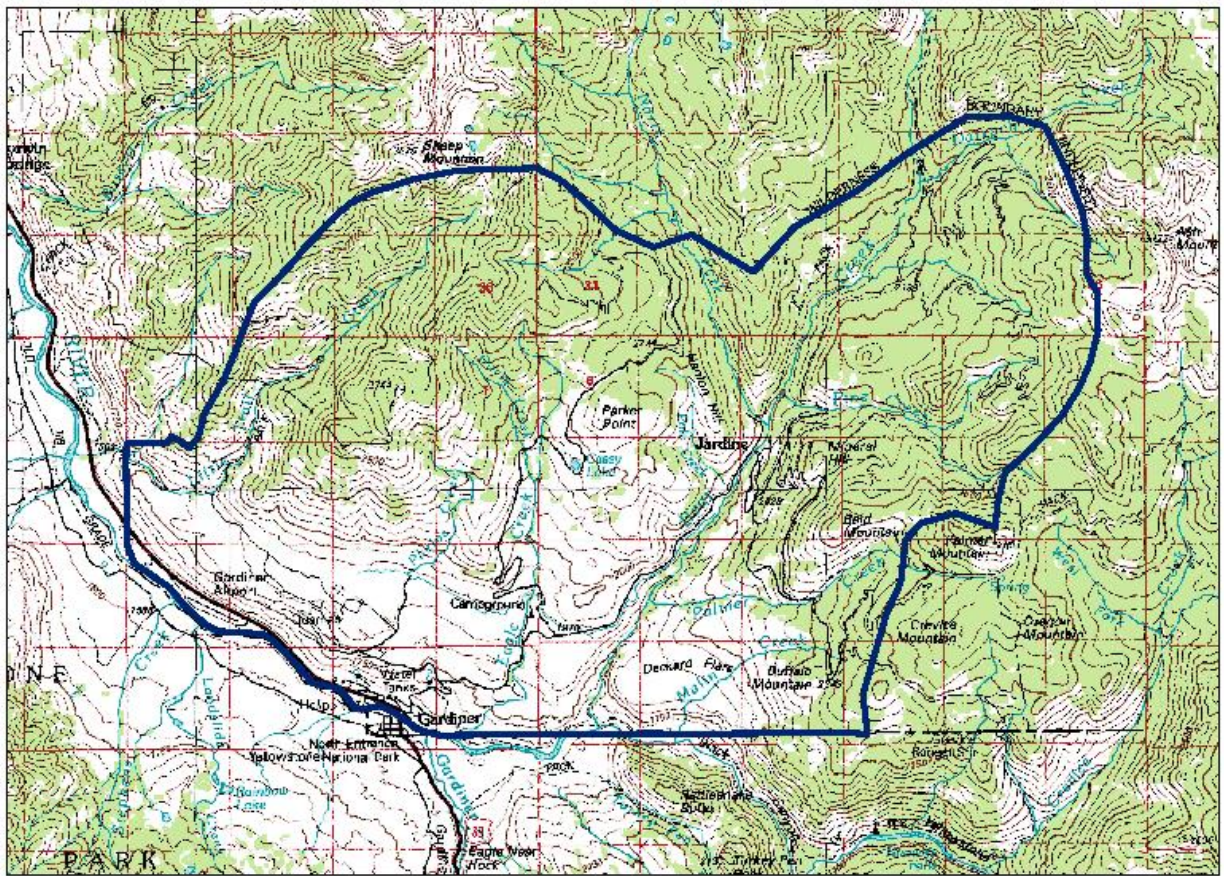


Figure 2. Delineation of the Eagle Creek/Bear Creek bison conservation area referenced in the Record of Decision for the Interagency Bison Management Plan (2000).